



SERIES

681  
682  
683  
684  
685



INDUSTRY LEADING  
COMMERCIAL & INDUSTRIAL SOLUTIONS



# Side-Folding Open Air Grilles

**SERIES 681 682 683 684 685**

## Standard Features At a Glance

|                          |   |
|--------------------------|---|
| Application              | When security is a priority, but you want to maximize air circulation, light infiltration and visual access to interior spaces our side-folding open air grilles are an ideal choice. |
| Warranty                 | 1 year limited  |
| Curtain                  |   |
| Frame                    | Truss-like aluminum top and bottom plates; 1/8" (3 mm) thick  |
| Panel Width              | 6 5/16" (160 mm) standard body 11 3/4" (299 mm) wide body   |
| Finish                   | Standard: Aluminum clear anodized<br>Optional: Aluminum color anodized, Duracron acrylic or powder coat paint finish  |
| Track                    |   |
| Trolley assembly         | 1 1/8" (29 mm)  |
| Vertical adjustment      | 1" (25 mm) up/down without curtain removal (Not available for E-models)   |
| Track detail             | Top-mounted, heavy-duty aluminum sections<br>Height: 1 5/8" (41 mm)<br>Width: 1 3/8" (35 mm)  |
| Curves                   | 90°, 120°, 135°, 150°<br>Custom upon request  |
| Radius                   | 14" (356 mm) standard body 22" (559 mm) wide body<br>Custom upon request  |
| Post types               |   |
| Lead post                | Hook lock and wall channel; bi-part; top and bottom shoot bolts   |
| Intermediate post        | Bottom shoot bolt   |
| Trailing end post        | Traveling; fixed; hook lock and wall jamb; top and bottom shoot bolts; carrier  |
| Locking mechanisms       |   |
| Lead post                | Concealed cylinder-operated hook lock accessible from interior and exterior   |
| Intermediate post        | Concealed cylinder-operated shoot bolt accessible from one side only  |
| Trailing end post        | Attached 10' max height protection plate self-locking into a steel V-Stop   |
| Security/ Safety options | Thumb-turn guards and protection bars. Emergency egress door (except 685 Series). High-impact extruded polymer (HIEP) curtain sleeves (681-E, 682-E, 683-E and 684-E only).           |

*Note: All Post types can be used in most any position as need dictates*

## Options

- Custom track radii and curves
- High-impact extruded polymer (HIEP) curtain sleeves (681-E, 682-E, 683-E and 684-E only)
- Emergency egress door (except 685 Series/Windowgard™)
- Thumb-turn guards and protection bars
- Color-matched, anodized finish\*
- Color-matched, Duracron (acrylic) finish
- Powder-coat paint finish in 21 standard colors, 172 premium colors, or color-matched to specification ("E" series not available in special colors.)

*\*681/683 anodized finish only*

## Open-Air Security G

**When security is a priority, but you want to maximize air circulation, light infiltration and visual access to interior spaces, the 681/682/683/684/685 Series is an ideal choice. Short on the space required for installation, but long on handsome good looks, these grilles secure premises and guard against theft and debris with superior compactness and nearly endless design possibilities.**

### Superior Compactness.

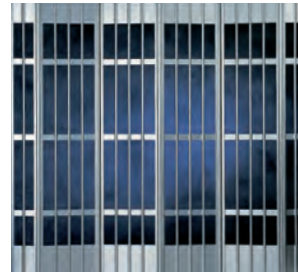
These side-folding, open-air grilles are ideal for spaces with limited headroom and sideroom. A low-profile, top-mounted track reduces headroom requirements to 1 5/8" (41 mm) and depth requirements to 1 3/8" (35 mm). Panels fold to an average 2" (51 mm) per linear foot on standard-width curtains. Wide-body curtains require an average of only 1 1/2" (38 mm) per linear foot. Minimum clear pocket widths of 8" (203 mm) on standard width grilles and 13" on wide-body models require significantly less depth. All-in-all, these grilles are the shortest-stacking, lowest-profile grilles money can buy.

### Well Engineered, Well Built.

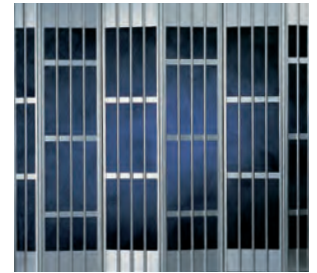
Quality engineering afford you superior design flexibility and ensure long-lasting looks and performance. Modular construction allows the grille to fit any opening width. Up to 2" (51 mm) of vertical adjustment allows field correction of uneven surfaces. Standard width and wide-body panels (681 and 681E only) offers alternative stacking pocket depths. Four standard curves (90°, 120°, 135° and 150°) — or customized to your specifications — accommodate odd-shaped designs or irregular lease lines.



## Grilles That Breathe With Style.

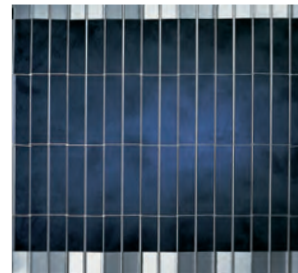


Straight Pattern

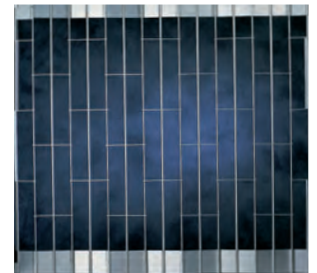


Brick Pattern

### 681/681-E Series (Suregard™ Wide Body)

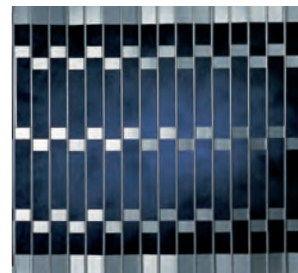


Straight Pattern



Brick Pattern

### 683/683-E Series (Suregard™)

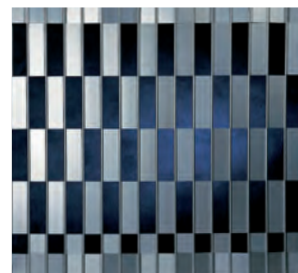


S-52/E-52

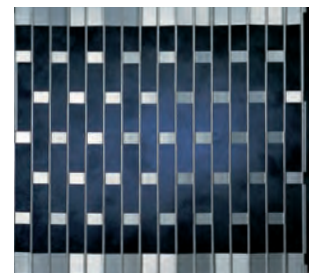


S-12/E-12

### 684/684-E Series (Astrogard™)



682 Series (Avantgard™)



685 Series (Windowgard™)

### A Spectrum of Options for Customized Results.

High-impact extruder polymer (HIEP) curtain sleeves are available on selected models (681E/682E, 683E/684E), affording economy and long life. Countertop or emergency egress doors are also available as options. Finishes include clear or color-matched anodization, color-matched acrylic, and a nearly unlimited selection of powder-coat colors.



---

## The Original, Innovative Choice for Unequalled Quality and Service

---

Overhead Door Corporation pioneered the upward-acting door industry, inventing the first upward-acting door in 1921 and the first electric door operator in 1926. Today, we continue to be the industry leader through the strength of our product innovation, superior craftsmanship and outstanding customer support, underscoring a legacy of quality, expertise and integrity. That's why design and construction professionals specify Overhead Door Corporation products more often than any other brand.

The red Overhead Door Ribbon is a mark of quality that also reflects the pride we take in the people who support our products. Our family of over 450 Ribbon Distributors across the country not only share our name and logo, but also our commitment to excellence. Your Ribbon Distributor will work with you in a consultative role to ensure that product selections achieve your design and application requirements — in addition to offering expert installation, professional field service and ongoing maintenance. From project design and manufacturing to installation and service, the Overhead Door Ribbon is your guarantee of genuine quality and turnkey service excellence.

**Together with our Ribbon Distributors, we offer comprehensive technical information and resource materials to support your project, including:**

- Architectural Design Manual – a comprehensive guide to selecting, specifying and detailing all commercial and industrial Overhead Door products
- Sweet's Catalog for selection information about our products, and Sweet's CD and CD-CAD for convenient electronic product information, technical specifications, and details with CAD "cut-and-paste" capability
- Operation & Maintenance Manual – detailed product information, customized for your project, to ensure reliable, long-life door system operation
- Custom application and technical assistance through ordering plants' customer service and technical services respectively
- Visit our Architect's Corner at [www.OverheadDoor.com](http://www.OverheadDoor.com)



Advanced Rolling Steel Door  
RapidSlat®



Thermacore® Sectional Doors



Rolling & Side Folding  
Security Grilles & Closures



Rolling Service Doors



Commercial Operators

Today, Overhead Door Corporation—along with our Horton Automatics division, for automated pedestrian entrances—is recognized as the leading, single-source manufacturer of integrated door and operator systems for commercial, industrial and residential applications. With multiple manufacturing locations throughout the United States, a state-of-the-art TREQ (Testing, Reliability, Engineering, and Quality) Center for design and engineering, and a national network of authorized Ribbon Distributors, our capabilities are leading-edge and our field service and technical support second to none. Built best and backed best, Overhead Door is the industry's leading choice for quality that shows and lasts.

**To talk with the Overhead Door distributor nearest you, call 1-800-929-DOOR.**

### Overhead Door Corporation

2501 S. State Hwy. 121 Bus., Suite 200

Lewisville, Texas 75067

1-800-929-DOOR

[www.OverheadDoor.com](http://www.OverheadDoor.com)



INDUSTRY LEADING  
COMMERCIAL & INDUSTRIAL SOLUTIONS

The Overhead Door Corporation family of quality commercial and industrial products includes:



A part of Sanwa Holdings Corporation